

Late Summer Fruit & Seeds Eloise Butler Wildflower Garden

These are fruits and seeds of flowering plants that you may encounter on a visit in **before Sept. 1st**. Alternate common names for plants are shown in (). Woody plants have an *. After the scientific name is a code for Garden Location U = Upland, W = Woodland, B = Both areas, WL = Wetland, T = Tree. Next is a code for native status. N = present in Minnesota at time of European settlement. NA = native in other parts of North America but not Minnesota. I = introduced after European Settlement. SC = Minnesota special concern list. T = threatened list. E = endangered list.



Baneberry -White- seeds
W N
Actaea pachypoda



Baneberry-Red - white berry form
B N
Actaea rubra



Dogwood - Red Osier *
WL N
Cornus sericea



Hophornbeam* (Ironwood)
T N
Ostrya virginiana



Snowberry*
W N
Symphoricarpos albus



Wolfberry*
W N
Symphoricarpos occidentalis



Meadow Goatsbeard
U I T
Tragopogon pratensis



Ohio Buckeye*
T NA
Aesculus glabra



Climbing Bittersweet* - Early Fall
U N
Celastrus scandens



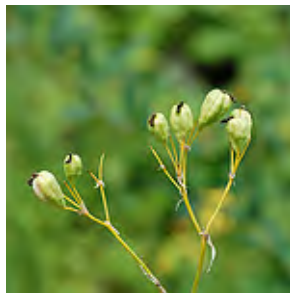
Ninebark* (Common Ninebark)
WL N
Physocarpus opulifolius



Thimbleweed - before capsule burst
U N
Anemone cylindrica & *Anemone virginiana*



White False Indigo (Wild White Indigo)
U N
Baptisia alba var. *macrophylla*



Blackberry Lily
U I
Belamcanda chinensis



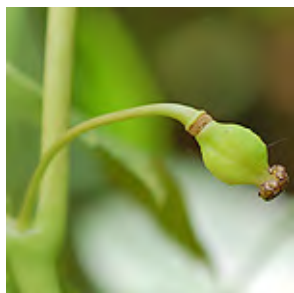
American Hazelnut* Nut
W N
Corylus americana



Hawthorn * early berries
W N
Crataegus chrysoarpa



White Avens
W N
Geum canadense (Yellow Avens similar)



May Apple
W N
Podophyllum peltatum



Missouri Gooseberry* fruit
B N
Ribes missouriense



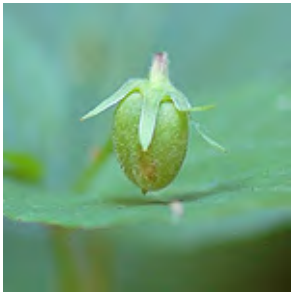
Wood Poppy (Celandine Poppy)
W NA
Stylophorum diphyllum



Nannyberry*
W N
Viburnum lentago

Late Summer Fruit & Seeds Eloise Butler Wildflower Garden

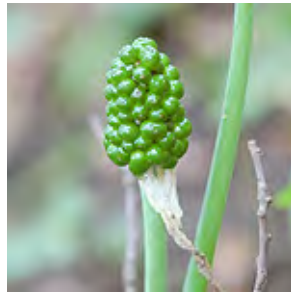
These are fruits and seeds of flowering plants that you may encounter on a visit in **before Sept. 1st**. Alternate common names for plants are shown in (). Woody plants have an *. After the scientific name is a code for Garden Location U = Upland, W = Woodland, B = Both areas, WL = Wetland, T = Tree. Next is a code for native status. N = present in Minnesota at time of European settlement. NA = native in other parts of North America but not Minnesota. I = introduced after European Settlement. SC = Minnesota special concern list. T = threatened list. E = endangered list.



W Canada Violet N
Viola canadensis



W Hog Peanut N
Amphicarpaea bracteata



W Jack-in-the-pulpit N
Arisaema triphyllum



B Poke Milkweed N
Asclepias exaltata



WL Swamp Milkweed N
Asclepias incarnata



U Common Milkweed N
Asclepias syriaca



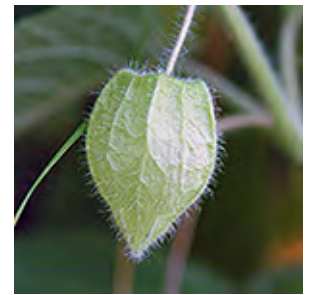
U Butterfly Weed (Butterfly Milkweed) N
Asclepias tuberosa



W Whorled Milkweed N
Asclepias verticillata



U Veiny Pea N
Lathyrus venosus
(AKA Veiny Vetchling)



U Clammy Ground Cherry N
Physalis heterophylla



W American Bladdernut* N
Staphylea trifolia



U Trailing Wild Bean N
Strophostyles helvola



W Blue Cohosh N
Caulophyllum thalictroides



W Dogwood - Pagoda* N
Cornus alternifolia



WL Dogwood - Pale* (Silky Dogwood) N
Cornus obliqua



T Eastern Red Cedar* N
Juniperus virginiana



B Great Solomon's Seal (Smooth Solomon's) N
Polygonatum biflorum



W Southern Arrowwood NA
Viburnum dentatum



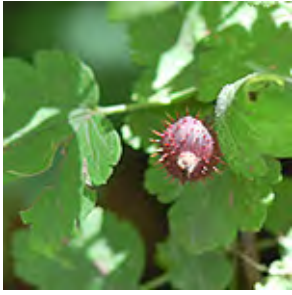
T Black Cherry* N
Prunus serotina



W Chokecherry* N
Prunus virginiana

Late Summer Fruit & Seeds Eloise Butler Wildflower Garden

These are fruits and seeds of flowering plants that you may encounter on a visit in **before Sept. 1st**. Alternate common names for plants are shown in (). Woody plants have an *. After the scientific name is a code for Garden Location U = Upland, W = Woodland, B = Both areas, WL = Wetland, T = Tree. Next is a code for native status. N = present in Minnesota at time of European settlement. NA = native in other parts of North America but not Minnesota. I = introduced after European Settlement. SC = Minnesota special concern list. T = threatened list. E = endangered list.



Eastern Prickly Gooseberry*
W N
Ribes cynosbati



Canada Elderberry*
(Am. Blk. Elderberry) N
B
Sambucus nigra ssp.
canadensis



Purple Trillium
W NA
Trillium erectum



Baneberry-Red - red berry form
B N
Actaea rubra



Serviceberry-Saskatoon*
W N
Amelanchier alnifolia



Downy Juneberry*
W N
Amelanchier arborea
(Serviceberries have similar fruit)



Goldenseal
W N
Hydrastis canadensis



Winterberry*
(Black Alder) N
WL
Ilex verticillata



Tatarian Honeysuckle*
B I
Lonicera tatarica



False Solomon's Seal
W N
Maianthemum racemosum



Starry False Solomon's Seal
WL N
Maianthemum stellatum



Pin Cherry* fruit
N T
Prunus pensylvanica



Sumac - Fragrant*
U NA
Rhus aromatica



Sumac - Smooth* fruit
U N
Rhus glabra



Sumac - Staghorn*
U N
Rhus hirta



Garden Currant*
W I
Ribes rubrum



Wild Roses*
U
6 species - see information sheets for details



Allegheny Blackberry*
B N
Rubus allegheniensis
(Early red stage)



Dewberry* - July fruit
U N
Rubus flagellaris



Wild Red Raspberry*
U N
Rubus idaeus

Late Summer Fruit & Seeds Eloise Butler Wildflower Garden

These are fruits and seeds of flowering plants that you may encounter on a visit in **before Sept. 1st**. Alternate common names for plants are shown in (). Woody plants have an *. After the scientific name is a code for Garden Location U = Upland, W = Woodland, B = Both areas, WL = Wetland, T = Tree. Next is a code for native status. N = present in Minnesota at time of European settlement. NA = native in other parts of North America but not Minnesota. I = introduced after European Settlement. SC = Minnesota special concern list. T = threatened list. E = endangered list.



W Black Raspberry* N
Rubus occidentalis
(Early red stage)



W (Flowering Raspberry) N
Rubus parviflorus



WL Red Raspberry -Dwarf N
Rubus pubescens



W Red Elderberry* N
Sambucus racemosa



B Climbing Nightshade (Bittersweet N'-shade) I
Solanum dulcamara



W Highbush Cranberry* (Am. Cranberrybush) N
Viburnum opulus



U European Cranberry* I
Viburnum opulus var. *opulus*



W Prickly-ash* N
Zanthoxylum americanum



U Horse Gentian (Late Horse Gentian) N
Triosteum perfoliatum



U Leadplant N
Amorpha canescens



U Canadian Milk Vetch N
Astragalus canadensis



U Sweet Fern* N
Comptonia peregrina



WL Cow Parsnip N
Heracleum maximum



U Curly Dock I
Rumex crispus



U False Blue Indigo (Blue Wild Indigo) NA
Baptisia australis



B Glossy Buckthorn I
Frangula alnus



W Common Buckthorn* I
Rhamnus cathartica



W American Black Currant* (Wild Black Currant) N
Ribes americanum



B Allegheny Blackberry* (Late Season) N
Rubus allegheniensis



W Black Raspberry* N
Rubus occidentalis